



WELCOME

Welcome to the dining program at Bowie State University managed by Aladdin. We offer a program that meets the needs of today's college student. Each year you will experience exciting changes, fresh menus, and new enhancements to your dining experience. The enhancements will be a result of the feedback and input of students, faculty, and staff.



HEALTHIER SELECTION



Bowie State University's dining program focuses on nutrition. We created BeWell to make it easier for you to choose well. First, our BeWell eating approach combines the latest in nutrition science and culinary trends to create a crave-worthy, nutritious menu choice. Second, our BeWell wellness approach encourages positive behavior change through our promotions, wellness education programs, and partnerships. Incorporating our StarChef program; an interactive menu program that highlights healthier options and provides the most current nutritional information for daily menus will complement BeWell.



SPECIAL DIETARY NEEDS

Bowie State's dining program will work with parents, school nurses, teachers, and health care providers to help manage students' food allergies and special diets by:

- » Working with physicians, dietitians, or qualified nutrition specialists to manage dietary substitutions.
- » Knowing where emergency medications are stored and knowing how they should be administered in case a student has an allergic reaction.
- » Reviewing menus with parents or students who have food allergies to determine what, if any, menu items need to be substituted.



DINING TEAM

HELDER PEDROSA

Food Service Director
(301) 860-3846 (ext. 23846)
helder.pedrosa@aladdinfood.com

KELLIE GREEN

Catering Director
(301) 860-3891 (ext. 23891)
kellie.green@aladdinfood.com

JESSICA GOMES

Outlet Manager
jessica.gomes@aladdinfood.com

TYLER FLANIGAN

Sous Chef
(301) 860-3804 (23804)
tyler.flanigan@aladdinfood.com

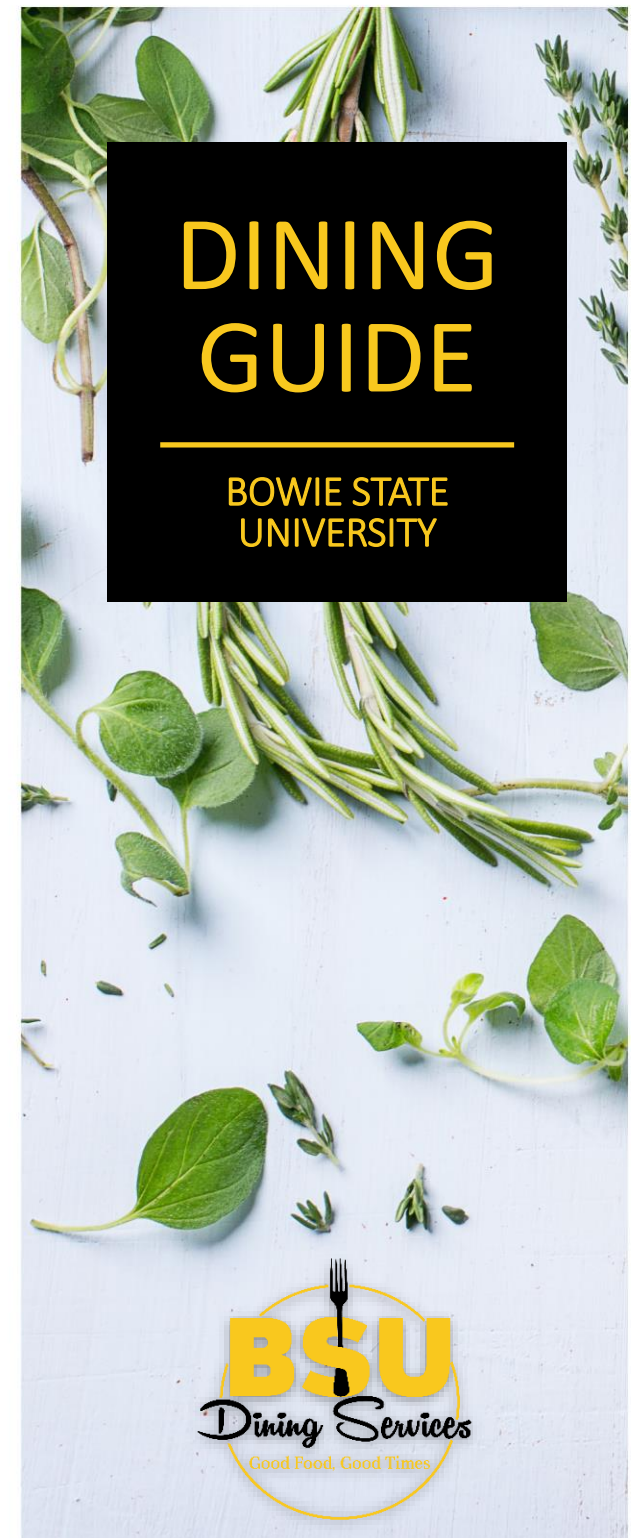
DIDIA (NELLY) THOMAS

Catering Chef
(301) 860-3807 (ext. 23807)
nelly.thomas@aladdinfood.com

Sheba Halliburton

Catering Coordinator
(301) 860.3805 (ext 23805)
Sheba.Halliburton@aladdinfood.com

For Updates | Special Events
Check out our Dining Website:
bowiestate.edudine.com/





RESIDENTIAL MEAL PLANS

19

19 MEAL PLAN

\$2,350

19 weekly meals
\$200 Flex per semester

14

14 MEAL PLAN

\$2,350

14 weekly meals
\$225 Flex per semester

10

10 MEAL PLAN

\$1,925

10 weekly meals
\$275 Flex per semester

CMRC 7 MEAL PLAN

7 meals per week
NO Flex
\$1,150

CMRC 7 MEAL PLAN

7 meals per week
WITH Flex
\$1,300

CMRC 5 MEAL PLAN

5 meals per week
NO Flex
\$840

CMRC 5 MEAL PLAN

5 meals per week
WITH Flex
\$940



COMMUTER MEAL PLANS

COMMUTER 25

25 meals per semester
\$140 Flex per semester
\$395

COMMUTER 50

50 meals per semester
\$175 in Flex per semester
\$680

COMMUTER 100

100 meals per semester
\$200 Flex per semester
\$1,190



DINING LOCATIONS

STUDENT CENTER DINING HALL

Monday–Friday

Breakfast 8:00am – 10:00am

Lunch 11:00am – 3:00pm

Dinner 4:00pm – 7:30pm

Saturday–Sunday

Brunch 11:00am – 2:00pm

Dinner 4:00pm – 7:00pm

BULLDOGS DEN CONVENIENCE STORE

Monday – Sunday

4:00pm – 12 Mid Night

THE PUB

Monday – Thursday

11:00am – 11:00pm

Friday

11:00am -7:00pm

Saturday & Sunday

Closed

SWEET
PEPPERS
Deli

HOME
SKILLET
Soul Food Cafe

tacos burritos bowls

CHILACA

THE GOLDEN GRUB AT THE MLK BUILDING

Monday – Friday

8:00am – 2:00pm

Saturday & Sunday

Closed

BULLDOG BITES AT THE CENTER FOR THE BUSINESS AND GRADUATE STUDIES

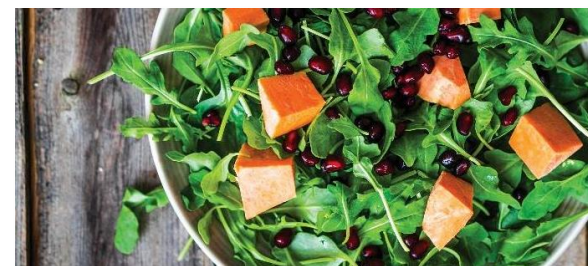
Closed



EMPLOYMENT

BSU Dining is always looking for responsible students who want to earn additional money while attending Bowie State University. There are many job opportunities available in the Dining Hall, Convenience Store, The Pub and Catering. We offer a variety of positions and we pay competitive wages. Work schedules are flexible enough to accommodate your busy schedule.

For more information contact:
Helder Pedrosa, Food Service Director
helder.pedrosa@aladdinfood.com



? SIGN UP FOR A MEAL PLAN

How do I sign up for a meal plan?

Residential students in traditional housing and CMRC sign up for a meal plan while completing the housing application. Commuter students and students living in housing facilities that do not require a meal plan can sign up by emailing bulldogcard@bowiestate.edu.

